



16. - 22. DEC 2019
ANNECY
LE GRAND-BORNAND
IBU WORLD CUP BIATHLON



**MEDIA
GUIDE**



ANNECY

**LE GRAND
BORNAND**

**EUROVISION
SPORT**
OPERATED BY EBU

infront

1 ACCREDITATION

Please pick up your accreditation at the Accreditation Centre.

Remember to bring your press card.

« Salle des Ambrunes »

81 route du Borne

74450 Le Grand-Bornand / France

Online registration: <https://www.biathlon-annecy-legrandbornand.com/presse-medias/>

OPENING TIMES	
Monday 16th December	12noon - 7pm
Tuesday 17th December	9am - 6pm
Wednesday 18th December	9am - 6pm
Thursday 19th December	9am - 4pm
Friday 20th December	9am - 4pm
Saturday 21st December	8am - 4pm
Sunday 22nd December	9am - 1pm

2 PRESS CENTRE

The press centre is situated in the Espace Grand-Bo.

Access is restricted strictly to those who can present press accreditation.



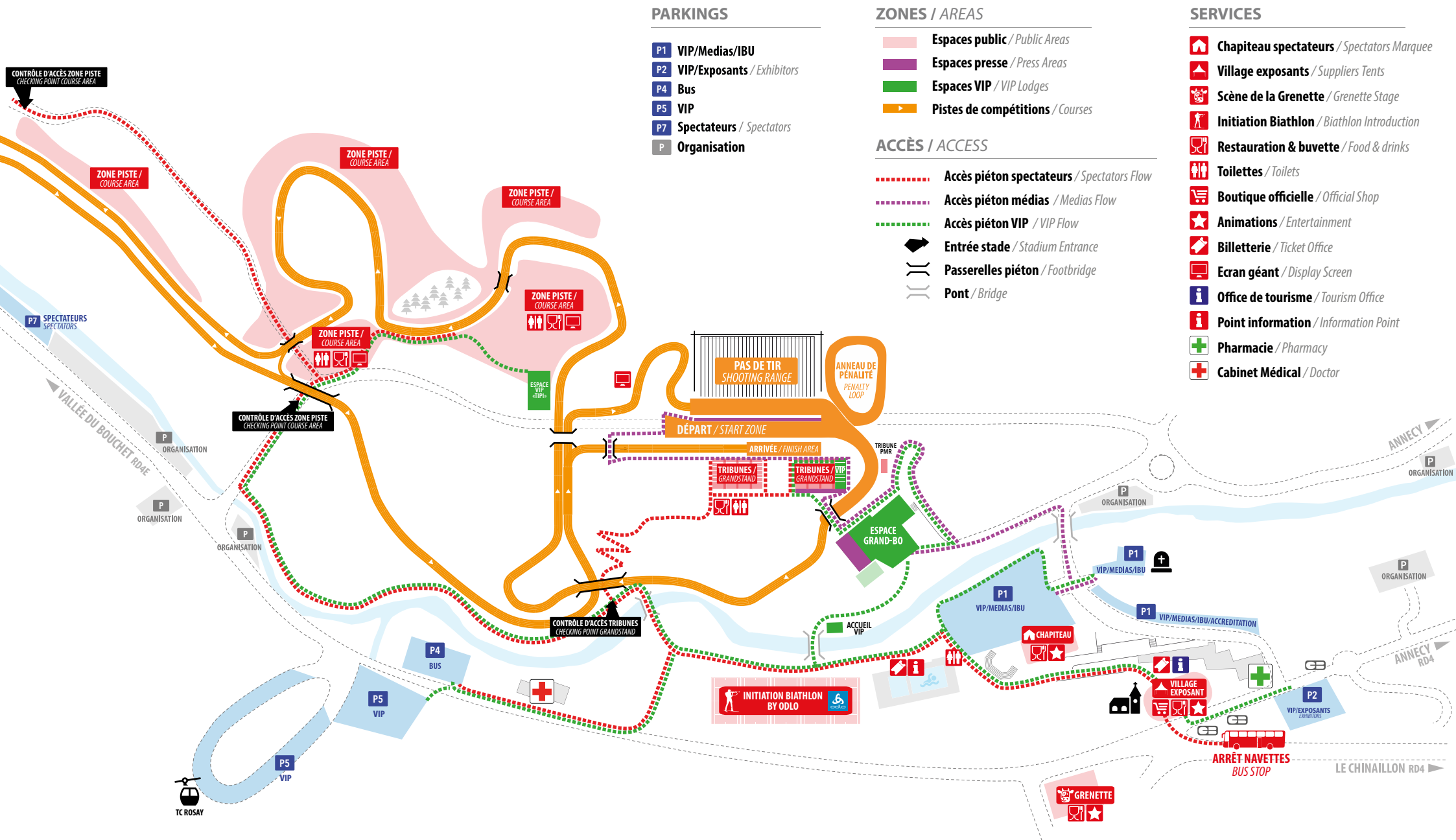
There is free WIFI for the press.

THE PRESS CENTRE IS OPEN FROM:	
Monday 16th December	2pm - 5pm
Tuesday 17th and Wednesday 18th December	8am - 6.30pm
From Thursday 19th to Sunday 22nd December	8am - 8pm

3 PRESS CONFERENCES

Press conferences shall take place at the press centre once the races finish, after the awards ceremony.

PLAN DU STADE STADIUM MAP



PARKINGS

- P1 VIP/Médias/IBU
- P2 VIP/Exposants / Exhibitors
- P4 Bus
- P5 VIP
- P7 Spectateurs / Spectators
- P Organisation

ZONES / AREAS

- Espaces public / Public Areas
- Espaces presse / Press Areas
- Espaces VIP / VIP Lodges
- ▶ Pistes de compétitions / Courses

ACCÈS / ACCESS

- - - - - Accès piéton spectateurs / Spectators Flow
- - - - - Accès piéton médias / Medias Flow
- - - - - Accès piéton VIP / VIP Flow
- Entrée stade / Stadium Entrance
- Passerelles piéton / Footbridge
- Pont / Bridge

SERVICES

- Chapiteau spectateurs / Spectators Marquee
- Village exposants / Suppliers Tents
- Scène de la Grenette / Grenette Stage
- Initiation Biathlon / Biathlon Introduction
- Restauration & buvette / Food & drinks
- Toilettes / Toilets
- Boutique officielle / Official Shop
- Animations / Entertainment
- Billetterie / Ticket Office
- Ecran géant / Display Screen
- Office de tourisme / Tourism Office
- Point information / Information Point
- Pharmacie / Pharmacy
- Cabinet Médical / Doctor

4 PHOTOGRAPHER INFORMATION



> PHOTO MANAGER

The photo manager for the World Cup in Annecy-Le Grand Bornand is Christian Manzoni.

> MAIN PHOTO/MOVING MEDIA BRIEFING

The main photo briefing will be held on Thursday, 19 December, 2 hours prior to the first competition in the Media Centre. The main photo briefing is mandatory for all moving media representatives that will attend the World Cup in Annecy-Le Grand Bornand.

All bibs for photographers are only handed out during the briefings.

> DAILY BRIEFINGS

There will be a photographer briefing held 30 minutes prior to the first zeroing. The meeting point is in the Media Centre.

PHOTOGRAPHERS WIFI

There will be a separate closed WIFI network for photographers.

For access and password, contact the information desk in the Media Centre.

> PHOTO BIBS

All photographers who work in the stadium area must wear a photo bib. The bibs and your accreditation card give you access to the photo zones and the Media Centre.

There will be two kind of bibs: **Regular Bibs** and **Priority Bibs**.

Regular Photo Bibs are available at the information desk at the Media Centre.

Priority Bibs for the whole week will be distributed during the main photo briefing. Priority Bibs are reserved for international and national agencies only and provide its holders with access to the shooting range sideways. To obtain the bib, you will have to leave a deposit.

In addition to the accreditation there will be bibs for ENG crews and the TV teams of the Host Broadcaster filming or using the tracks. For each ENG camera an event sticker must be obtained. Camera stickers and TV and ENG bibs will be ready for collection at the Accreditation Office.

5 TRANSPORT



GETTING HERE BY PLANE

Annecy-Meythet Airport 35 km away > www.annecy.aeroport.fr

Lyon - Saint Exupéry Airport 150 km away > www.lyon.aeroport.fr

Geneva International Airport 65 km away > www.gva.ch



GETTING HERE BY TRAIN

Annecy train station 30 km away

TGV (high-speed train) connections from most major cities.

Book your tickets online: www.sncf.com

Booking: +33 (0)8 92 35 35 35

Daily bus connections

Voyages Crolard : +33 (0)4 50 02 20 58

Book your tickets online: www.voyages-crolard.com



GETTING HERE BY CAR

The Col de la Colombière is closed in winter.

The Aravis Massif is easily accessible:

- A 40 (Autoroute Blanche); exit 16 Bonneville, follow Stations des Aravis 20 km away

- A41 exit Annecy Nord, follow Thônes / Aravis Resorts 30 km away.

6 NEED A TAXI?

 **In Le Grand-Bornand :**

Taxi Bastard Eric : +33 (0)4 50 02 20 64

www.taxieric.com

 **Outside Le Grand-Bornand :**

GBO Taxi : +33 (0)6 14 46 22 94

Taxi Point : +33 (0)6 70 95 40 41

<http://www.taxipoint.eu>

Taxi des Aravis : +33 (0)6 33 86 08 26

www.taxidesaravis.com

SHARED TRANSPORT ?

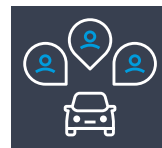
Aravis Shuttle Genève-Aravis :

<https://www.aravis-shuttle.com>

(fixed price of 40 € per person per transfer)

Carpooling


mov'ici
Auvergne-Rhône-Alpes



<https://movici.auvergnerhonealpes.fr/evenements/covoiturages/bmw-ibu-coupe-du-monde-de-biathlon-annecy-le-grand-bornand>

7 PARKINGS

The **P1** and **P5** parkings for the media are located near the press centre.

Please go to the press centre to pick up your Pass from Yves Perret, Head of Media. Limited numbers.

8 SHUTTLES

Over the duration of the biathlon, a shuttle service will be running from the two hotels booked for the press in the centre of La Clusaz, 6 kilometres away from the competition.

9 ACCOMMODATION

Hotel rooms have been booked for the press at two hotels in the centre of La Clusaz, 6 kilometres from the Sylvie Becaert biathlon stadium in Le Grand-Bornand.



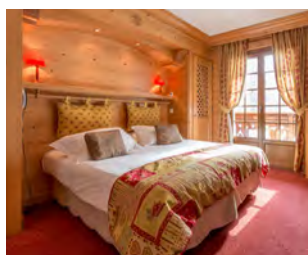
** HOTEL

1 night in a single room + breakfast

€93 (+ €0.90 Tourist tax)

1 night in a single room with half board

€116 (+ €0.90 Tourist tax)



*** HOTEL

1 night in a single room + breakfast

€113 (+€1.50 Tourist tax)

Information and bookings: Delphine Pochat-Cottilloux and Laura Greenwood
T : +33 (0)4 50 02 78 09 / groupes@legrandbornand.com

10 CATERING

A lunchtime catering service is provided beside the press centre (11.30am - 3pm).

11 ADDITIONAL INFORMATION

The Tourist Office of Le Grand-Bornand is at your service to answer any request:

Julien-Gabriel PERBELLINI

T : +33 (0)6 28 42 66 23

jgperbellini@legrandbornand.com

12 COMPETITION SCHEDULE

	COMPETITION /ZEROING	TRAINING
MONDAY DECEMBER 16		
		Training Only skiing 13:30 - 16:30
TUESDAY DECEMBER 17		Training Women 10:00 - 12:00
		Official training Men 13:30 - 15:30
WEDNESDAY DECEMBER 18	16:00 - 16h30 TV TEST 7,5 km (3x2,5)	Training Men 10:00 - 12:00
		Official training Women 13:30 - 15:30
THURSDAY DECEMBER 19		Training Women 10:00 - 12:00
	13:15 - 14:05 Zeroing Men 14:15 SPRINT MEN 10 km	
FRIDAY DECEMBER 20		Training Men 10:00 - 12:00
	13:15 - 14:05 Zeroing Women 14:15 SPRINT WOMEN 7,5 km	
SATURDAY DECEMBER 21	12:15 - 12:45 Zeroing Men 13:00 PURSUIT MEN 12,5 km	
	14:15 - 14:45 Zeroing Women 15:00 PURSUIT WOMEN 10 km	Mixed Training 16:00 - 17:00
SUNDAY DECEMBER 22	11:25 - 11:55 Zeroing Men 12:10 MASS START MEN 15 km	
	13:30 - 14:00 Zeroing Women 14:15 MASS START WOMEN 12,5 km	

**HEAD
OF MEDIA**

**Yves
PERRET**

+33 (0)6 07 31 62 72
yves@ypmedias.com

**IBU COMMUNICATIONS
DIRECTOR**

**Christian
WINKLER**

+43 676 841 498 15
christian.winkler@ibu.at

**IBU PHOTO
MANAGER**

**Christian
MANZONI**

+43 676 841 498 33
christian.manzoni@ibu.at

**PRESS CONTACT AT
LE GRAND-BORNAND**

**Julien-Gabriel
PERBELLINI**

+33 (0)6 28 42 66 23
jgperbellini@legrandbornand.com



BIATHLON-ANNECY-LEGRANDBORNAND.COM

#ALGB19



[Biathlon.Annecy.LeGrandBornand](https://www.facebook.com/Biathlon.Annecy.LeGrandBornand)



[@BiathlonALGB](https://twitter.com/BiathlonALGB)



[BiathlonALGB](https://www.instagram.com/BiathlonALGB)



ANNECY

**LE GRAND
BORNAND**

La Région
Auvergne-Rhône-Alpes

haute
savoie
le Département

**SAVOIE
MONT
BLANC**

CCVT
COMITÉ
DES VALLÉES
DE THÔNES